

Protecting wildlife when canoeing, kayaking and paddleboarding on the Deben



- We are very fortunate that the river Deben is designated as being of international importance for wintering birds and has national protection for both breeding and wintering birds. We have brent geese, redshanks, curlews, avocets and lapwings, to name but a few.
- In order to protect our wonderful estuarine environment and its wildlife, please look at the maps overleaf to see which are the most sensitive wildlife areas to avoid.
- Please keep away from key breeding, roosting and feeding areas all year round.
- Please launch and land from an official slipway - there are many on the river as part of boatyards and clubs. Do not 'seal' launch your canoe or SUP over mud or saltmarsh banks, it can cause wildlife disturbance and wear away natural banks.
- Keep an eye on wildlife when you are on the water and keep a respectful distance away to avoid disturbance. If you see birds moving to take flight or hauled-out seals rapidly moving to slip into the water, you are too close and are causing them stress. This can affect their survival capability.
- You can report any sightings of poor conduct and disturbance to ProtectedSites@naturalengland.org.uk
- If you would like to know more about the importance of the Deben to wildlife conservation, you can check out the links below:

[Deben Estuary Ramsar site](#)

[Deben Estuary Special Protection Area](#)

[Deben Estuary Site of Special Scientific Interest](#)

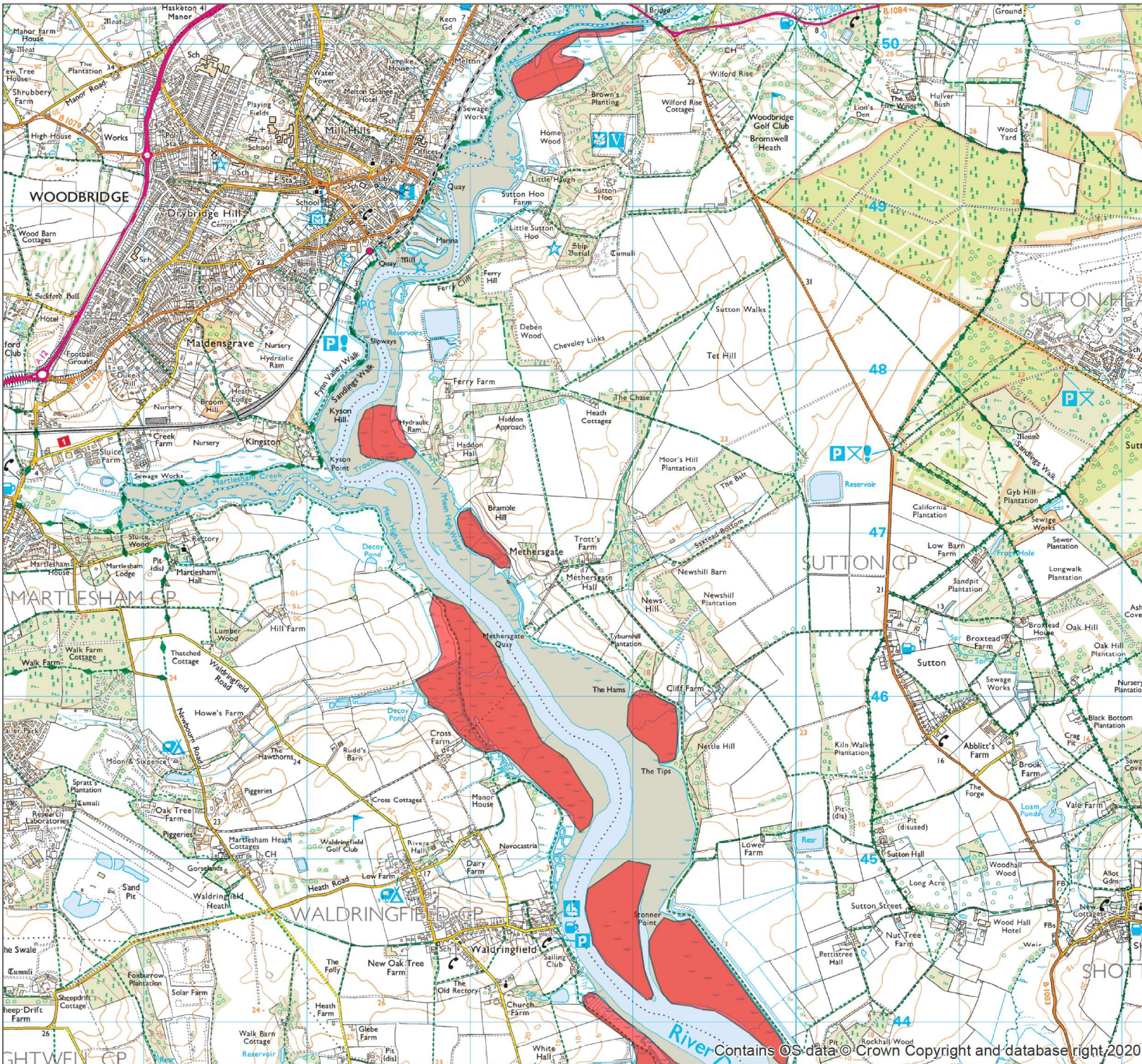
[The Redshank in the Coast & Heaths AONB](#)



River Deben Association



*Artwork by
Claudia Myatt*



DEBEN ESTUARY NORTH, SUFFOLK - Areas to avoid when using canoes, kayaks and paddleboards to protect wildlife

Legend:

Refuge areas - please try to avoid at all times

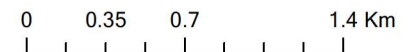
Acknowledgements & notes:

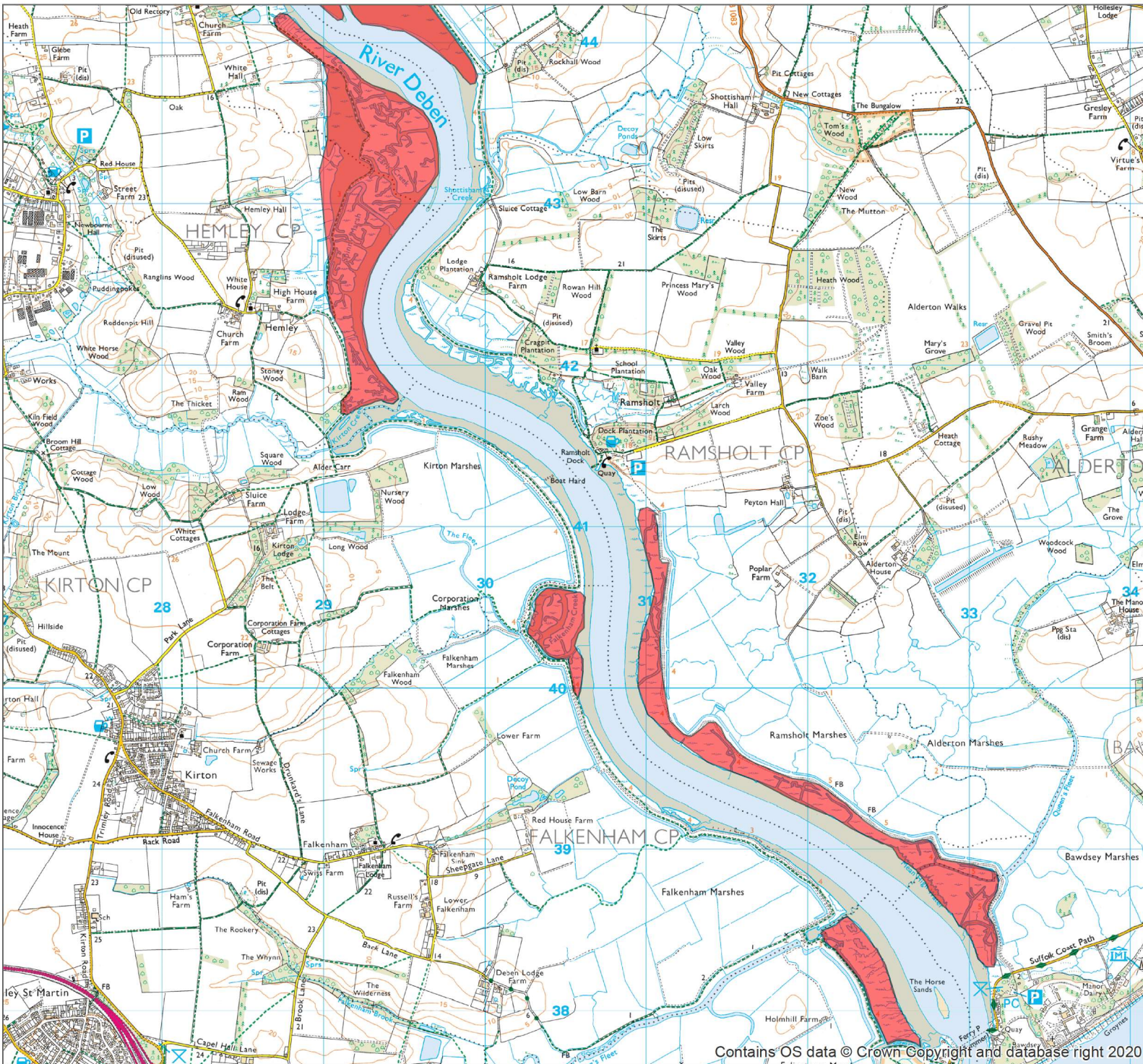
Created by: RSPB, Suffolk Wildlife Trust and Coast & Heaths AONB
 © Crown Copyright. All rights reserved. RSPB licence 100021787.



Map scale = 1:33,462

Date printed: 30/03/2021





DEBEN ESTUARY SOUTH, SUFFOLK - Areas to avoid when using canoes, kayaks and paddleboards to protect wildlife

Legend:

Refuge areas - please try to avoid at all times

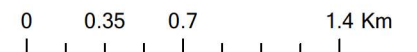
Acknowledgements & notes:

Created by: RSPB, Suffolk Wildlife Trust and Coast & Heaths AONB
 © Crown Copyright. All rights reserved. RSPB licence 100021787.



Map scale = 1:33,834

Date printed: 30/03/2021



Contains OS data © Crown Copyright and database right 2020

